

Polysto kerbs F-model

F-models are prefabricated full core kerbs with sloped top and skirting to wall-floor according hygienic requirements. Available in a SaniCoat or a natural version. The kerbs consist of a water repellent durable CleanRock mass. The SaniCoat version is finished food-safe with a smooth Sanicoat (Polyester gelcoat).

Including matching accessories; prefabricated internal and external corners and end-pieces.

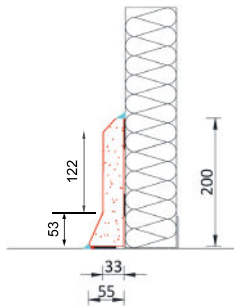
Waterproof bonding using Polysto Hard Fix Glue (Hybrid Polymere) . Finishing of the joints using Polysto Food Safe Sealant or a chemical welding HygiSeal. For SaniCoat kerbs the color white is used, for Natural kerbs RAL9002 is used.

OP20F(na)



IMPACT CLASS 2

against manual trolleys up to max. 200 Kg total weight



Technical info

	Kerb	Corner internal / external	End piece right / left
Length	1.000 mm	2 x 500 mm	500 mm
Height	200 mm	200 mm	200 mm
Thickness	33 mm	33 mm	33 mm
Weight	15 kg	15 kg	7,5 kg
Amount / pallet	50 m	50 pc	50 R & 50 L
Pallet size	120 x 80 x 70cmH	120 x 80 x 70cmH	120 x 80 x 70cmH
Pallet weight	+/- 770 kg	+/- 770 kg	+/- 770 kg
Temperature resistance	-35°C - +85°C (long exposure)		

Average consumption of (per meter)

Food Safe sealant or HygiSeal white or RAL9002	140 cc
Food Safe sealant transparent	100 cc
Hard Fix Glue	300 cc

Installation m/day (8h) with 1 installer

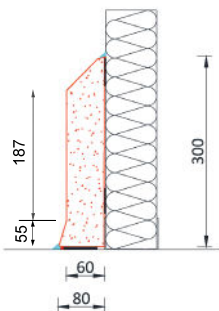
Food Safe Sealant	50 meter
HygiSeal	25 meter

OP30F(na)



IMPACT CLASS 3

against manual palet truck up to max. 900 k total weight



Technical info

	Kerb	Corner internal / external	End piece right / left
Length	1.500 mm	2 x 500 mm	500 mm
Height	300 mm	300 mm	300 mm
Thickness	60 mm	60 mm	60 mm
Weight	57,80 kg	38,50 kg	19,25 kg
Amount / pallet	30 m	20 pc	20 R & 20 L
Pallet size	155 x 65 x 70cmH	120 x 80 x 70cmH	120 x 80 x 70cmH
Pallet weight	+/- 1.170 kg	+/- 790 kg	+/- 790 kg
Temperature resistance	-35°C - +85°C (long exposure)		

Average consumption of (per meter)

Food Safe sealant or HygiSeal white or RAL9002	140 cc
Food Safe sealant transparent	150 cc
Hard Fix Glue	450 cc

Installation m/day (8h) with 2 installers

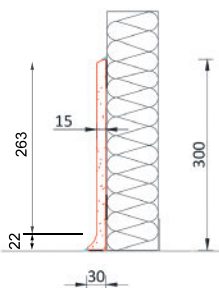
Food Safe Sealant	60 meter
HygiSeal	40 meter

OP30SF(na)



IMPACT CLASS 1

no impact



Technical info

	Kerb
Length	1.500 mm
Height	300 mm
Thickness	15 mm
Weight	15 kg
Amount / pallet	60 m
Pallet size	155 x 65 x 70cmH
Pallet weight	+/- 750 kg
Temperature resistance	-35°C - +85°C (long exposure)

Average consumption of (per meter)

Food Safe sealant or HygiSeal white or RAL9002	140 cc
Food Safe sealant transparent	150 cc
Hard Fix Glue	300 cc

Installation m/day (8h) with 1 installer

Food Safe Sealant	40 meter
HygiSeal	25 meter

IP30F(na)

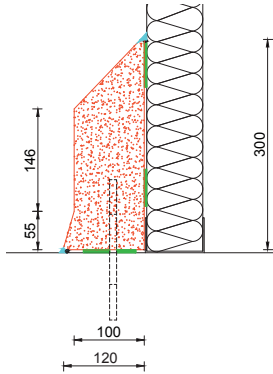


IMPACT CLASS 4 (not anchored)
IMPACT CLASS 5 (anchored)

against electric pallet trucks up to max. 1500 Kg total weight

against engine driven pallet trucks and vorklifts up to max. 4000 Kg total weight and max. speed of 5 Km/h when anchored

NEW AVAILABLE FROM END OF JUNE 2023



Technical info

	Kerb	Corner internal / external	End piece right / left
Length	1.500 mm	2 x 500 mm	500 mm
Height	300 mm	300 mm	300 mm
Thickness	100 mm	100 mm	100 mm
Weight	86 kg	54 kg	27 kg
Amount / pallet	18 m	12 pc	12 R & 12 L
Pallet size	155 x 65 x 70cmH	120 x 80 x 70cmH	120 x 80 x 70cmH
Pallet weight	+/- 1.050 kg	+/- 675 kg	+/- 675 kg
Temperature resistance	-35°C - +85°C (long exposure)		

Average consumption of (per meter)

Food Safe sealant or HygiSeal white or RAL9002	150 cc
Food Safe sealant transparent	200 cc
Hard Fix Glue	600 cc
Chemfix	150 cc

Installation m/day (8h) with 2 installers	
Food Safe Sealant	40 meter
HygiSeal	30 meter

Optional chemical anchorage of Ø10 - 150 mm or 200 mm with Polysto 2-component Chemfix.

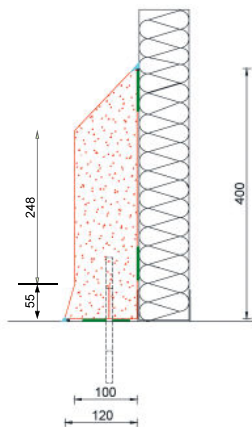
IP40F(na)



IMPACT CLASS 4 (not anchored)
IMPACT CLASS 5 (anchored)

against electric pallet trucks up to max. 1500 Kg total weight

against engine driven pallet trucks and vorklifts up to max. 4000 Kg total weight and max. speed of 5 Km/h when anchored



Technical info

	Kerb	Corner internal / external	End piece right / left
Length	1.500 mm	2 x 500 mm	500 mm
Height	400 mm	400 mm	400 mm
Thickness	100 mm	100 mm	100 mm
Weight	124 kg	84 kg	42 kg
Amount / pallet	18 m	12 pc	12 R & 12 L
Pallet size	155 x 85 x 70cmH	120 x 80 x 70cmH	120 x 80 x 70cmH
Pallet weight	+/- 1.500 kg	+/- 1.000 kg	+/- 1.000 kg
Temperature resistance	-35°C - +85°C (long exposure)		

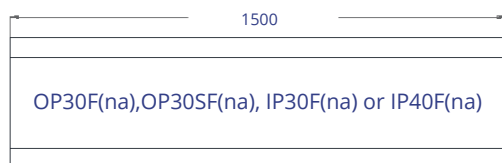
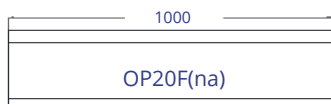
Average consumption of (per meter)

Food Safe sealant or HygiSeal white or RAL9002	150 cc
Food Safe sealant transparent	200 cc
Hard Fix Glue	650 cc
Chemfix	150 cc

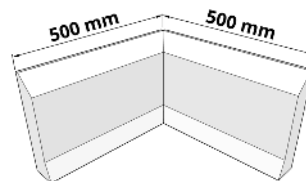
Installation m/day (8h) with 2 installers	
Food Safe Sealant	40 meter
HygiSeal	30 meter

Optional chemical anchorage of Ø10 - 150 mm or 200 mm with Polysto 2-component Chemfix.

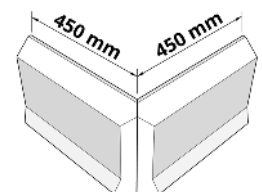
Kerb



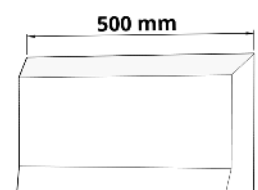
Internal corner

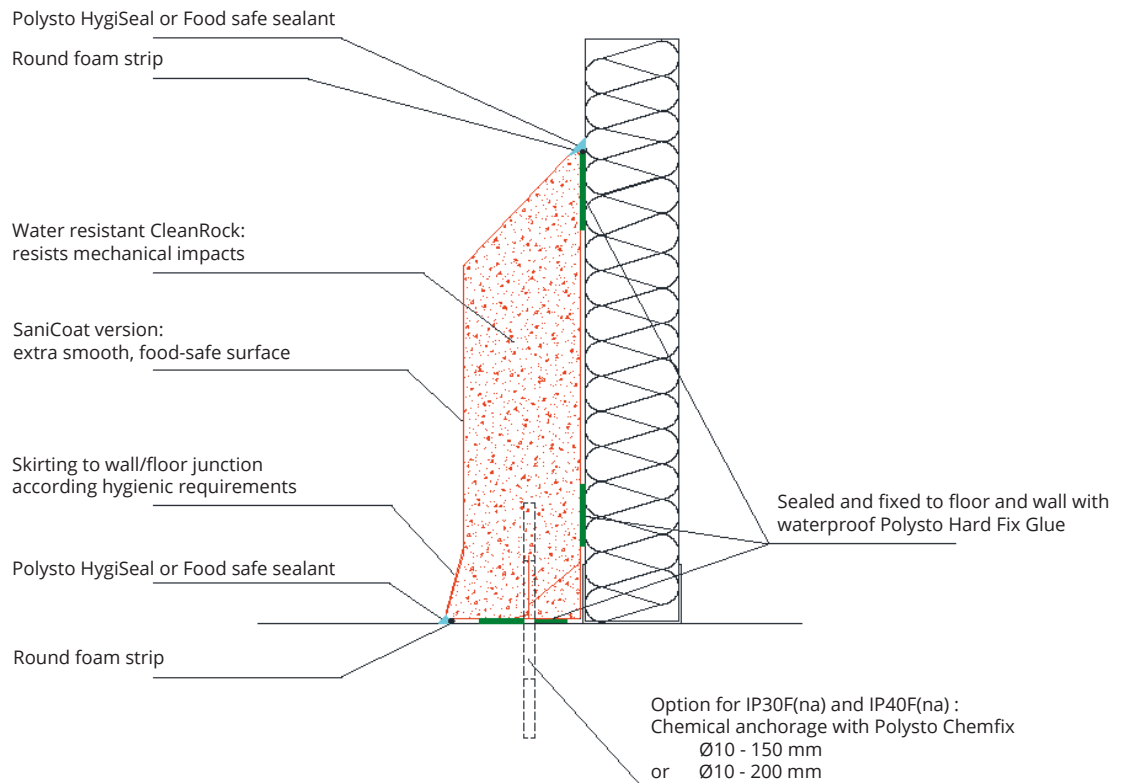


External corner



End piece





OP20F SaniCoat



OP30F SaniCoat



OP30SF SaniCoat



OP20F Natural

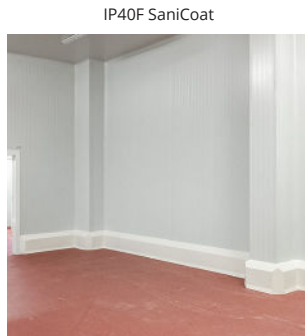


OP30F Natural



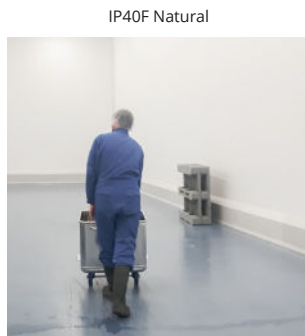
OP30SF Natural

IP30F SaniCoat



IP40F SaniCoat

IP30F Natural



IP40F Natural